

Areor Series Transparent Display Cabinet



BENEFITS AT A GLANCE

- Appearance design has been applied for patent, perfect product visibility: the upper cabinet is fully transparent-the product can be viewed at a glance
- Flexible assembly: according to different design layouts, it can be placed in a single or array
- to optimize the utilization of floor space and extra display areas
- Drawable condensing unit: the maintenance convenience can be improved.
- Built-in evaporative water box, no need to pour water manually
- Overall energy efficiency: "Super" Grade 1, a response to the national policy of carbon neutrality
- Improved controller position: the controller is located in the lower part, which is easier to check and display
- High-efficiency refrigerant, R404A

CUSTOMER VALUE

- All-transparent design, excellent display performance
- Flexible installation combination, suitable for various layouts
- Super energy efficiency, corresponding to carbon neutrality policy in China

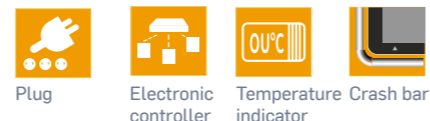
STANDARD CONFIGURATION OPTIONS

- | | |
|--|--|
| <ul style="list-style-type: none"> ■ Short bottom panel ■ Galvanized steel base with powder-coated finish, ■ The exterior and interior color is black ■ Temperature-assured forced-air cooling with air outlet ■ High efficiency energy-saving condenser fan ■ Automatic defrosting, and condensed water evaporated after heating ■ Electronic controller ■ Sliding condensing unit ■ Factory installed casters | <ul style="list-style-type: none"> ■ Power cable ■ Long bottom panel ■ Electronic controller (485 support) ■ EC fan ■ Various colors available at bottom ■ Temperature indicator on top ■ Crash bar (under development) ■ Display props ■ Galvanized steel base with external and internal colors optional* |
|--|--|

Galvanized steel base with external and internal colors optional



Optional: short bottom panel



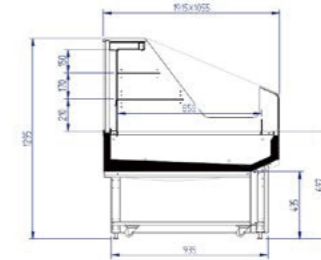
*Refer to Carrier Powder Paint Selection Guide

NAMING RULES

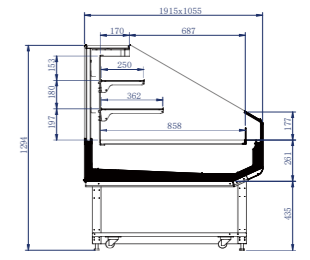
Areor **ST188** **G** **D**

- D: Dairy Case
- M: Milk Case
- Default: Dairy Case
- G: Glass Side Panel
- A: Acrylic Side Panel
- Cabinet Width (Currently only 188cm, side panel not included)
- Product Series

DIMENSION DRAWING



Areor ST188 A/ GM



Areor ST188 G D



Areor ST188 A

- Temperature control: 3H1
- Height of front trim: 280mm
- Material of top panel and side panel: Acrylic



Areor ST188 G D

- Temperature control: 3H1
- Height of front trim: 180mm
- Material of top panel and side panel: hollow glass
- Back supported by column
- Metal shelf support arm
- Crash bar (Optional)



Areor ST188 G M

- Temperature control: 3M1
- Height of front trim: 280mm
- Material of top panel and side panel: hollow glass
- Back supported by column
- Metal shelf support arm
- Crash bar (Optional)

ADAPTIVE EXHIBITION AND DISPLAY PROPS



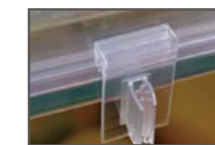
Magnetic paster



Three-layer dual-purpose display shelf



Slotable display stack



Promotion cards/price tags



Sucker

Standard Model	Areor Series ST188 Transparent Display Fruit Cabinet (Plug-in) Depth - 1055	Fully Transparent Self-service Fruit Cabinet	Fully Transparent Self-service Beef Case
	Areor ST188	Areor ST188 G D	Areor ST188 G M
Dimensions (Width)	1915		
Dimensions (Depth)	1055		
Dimensions (Height)	1295		
Operation Temperature (°C)	1-10	1-10	-1-5
Temperature Grade	3H1	3H1	3M1
Rated Voltage (V)	220V		
Rated Frequency (Hz)	50Hz		
Net Weight (kg)	292	290	292
Display Area (m ²)	3.63	3.60	3.60
Effective Volume (m ³)	0.51	0.51	0.51
Energy Efficiency Level (EEL)	Grade 1		

(1) Both TEC and energy efficiency level are the data with evaporative electric heating power consumption.
 (2) Test data of acoustic insulation foam for wrapped compressors.